

01 Regular Programs

These are permanent year-long programs developed for learners who aim to learn communicative Korean language skills in an integrated course. The programs are tailored to foreigners, Koreans from abroad, and immigrants living in South Korea who want to go on to universities or graduate schools in the country or to engage in business or find employment related to South Korea through intensive study in Korean. These programs consist of six levels (Level 1-Level 6). Students in each level will enhance their ability to communicate in Korean and also participate in diverse cultural experiences for 200 hours over a total of 10 weeks. Each class is small and consists of approximately 12 to 15 students. Scholarships are also awarded to outstanding students. Students registered in regular programs may apply for the on-campus dormitories and a General Training Visa (D-4).

In addition, advanced academic classes, which are for learners who have received Korean language education equal to Level 6 or above of the regular programs or have an equivalent level of proficiency, allow students to acquire diverse language skills necessary for college and graduate courses while developing cultural awareness and professional language skills necessary for work life.

Regular Programs	Beginner	Intermediate	Advanced	Advanced academic classes
	Levels 1,2	Levels 3,4	Levels 5,6	
Session Class time	Four sessions per year (spring, summer, fall, and winter); 10 weeks per session [Morning classes] 09:00-13:00, Mon.-Fri. (total: 200 hours per session) [Afternoon classes] 13:30-17:20, Mon.-Fri. (total: 200 hours per session) [Advanced academic classes (research group) -Morning classes] 09:00-13:00, Mon.-Thurs. (total: 160 hours per session) [Advanced academic classes (research group) -Afternoon classes] 13:30-17:20, Mon.-Thurs. (total: 160 hours per session)			
Tuition fee	[Morning classes] 1,800,000 won [Afternoon classes] 1,650,000 won [Advanced academic classes (research group) -Morning classes] 1,450,000 won [Advanced academic classes (research group) -Afternoon classes] 1,320,000 won			

※ The tuition fee for every course is subject to change without notice throughout the year. Please check the website.



Housing Facilities

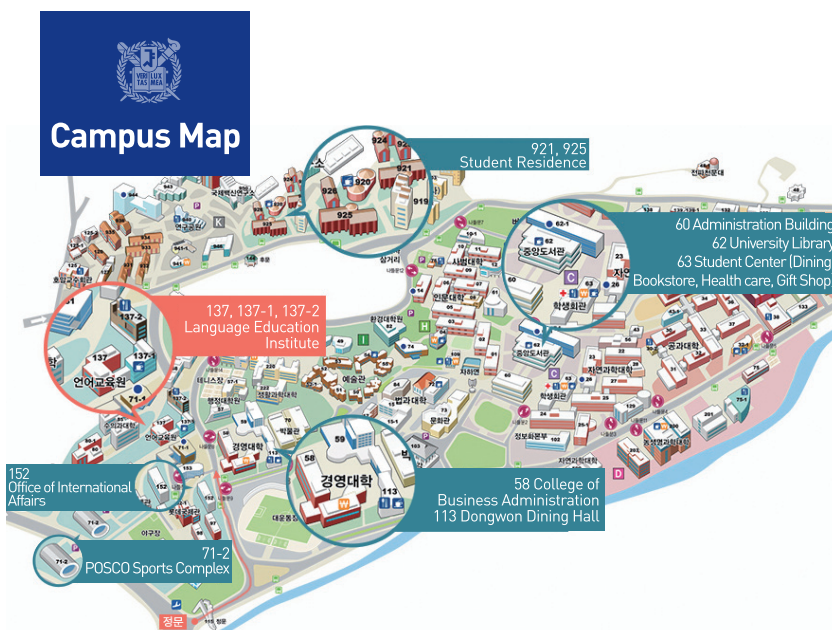
For students registered in LEI's regular programs (morning and afternoon classes), dormitories are offered on and off campus. Dormitory residents are selected on a first-come, first-served basis, and priority is given to new students. Students may stay at the dormitories for a maximum of three sessions (9 months).

- ※ Separate bank accounts are used for the payment of the tuition and dormitory fee.
- ※ Detailed information on the SNU dormitories (on-campus) and the LEI dormitories (off-campus) including their locations, facilities, and fees are available on the KLEC website (lei.snu.ac.kr/klec).

2023 Academic Calendar

	Session	Duration	Document submission deadline	Notification of admission (e-mail)	Placement test
Regular Programs	Spring	3.6 – 5.12	12.26(Mon.)	1.9(Mon.) 17:00	February
	Summer	6.5 – 8.11	3.27(Mon.)	4.10(Mon.) 17:00	May
	Fall	9.4 – 11.10	6.26(Mon.)	7.10(Mon.) 17:00	August
	Winter	12.4 – 24.2.9	9.20(Wed.)	10.10(Tue.) 17:00	November
Special Programs	Evening Classes		Limited to visa holders		
	Spring	3.6 – 5.11	2.3(Fri.)	2.10(Fri.)	February
	Summer	6.5 – 8.10	5.4(Thu.)	5.12(Fri.)	May
	Fall	9.4 – 11.9	8.4(Fri.)	8.11(Fri.)	August
	Winter	12.4 – 24.2.8	11.3(Fri.)	11.10(Fri.)	November
	Online 3-Week Intensive Program				
	Spring	2.13 - 3.3	1.6(Fri.)	1.10(Tue.)	January
	Summer	8.14 - 9.1	6.30(Fri.)	7.4(Tue.)	July
	13-week Korean Language Program		Limited to visa holders		
	Spring	3.6 – 6.2	2.3(Fri.)	2.10(Fri.)	February
Korean Language Teacher Training Program	Spring	3.6 – 6.12 (14 weeks)	2.3(Fri.)13:00	2.6(Mon.)	
	Summer	7.3 – 8.9 (5 weeks)	6.2(Fri.)13:00	6.5(Mon.)	
	Fall	9.4– 12.11 (14 weeks)	8.4(Fri.)13:00	8.7(Mon.)	
	Winter	2024.1.2 - 2.8 (6 weeks)	12.1(Fri.) 13:00	12.4(Mon.)	

※ The schedule is subject to change due to Center's circumstances.



Korean Language Education Center
Seoul National University

Room. no. 101, Building Number 137, Korean Language Education Center, Language Education Institute
1 Gwanak-ro, Gwanak-gu, Seoul 08826, Korea

Phone +82-2-880-5488, 8570 FAX +82-2-871-6808

E-mail klp@snu.ac.kr

Website lei.snu.ac.kr

137 / Language Education Institute - Main Building (KLEC Office)

137-1 / Language Education Institute - New Building (CJ Language Education Building)

137-2 / Language Education Institute - Daelim International House



Seoul National University

The Korean Language Program



2023

Korean Language Education Center
SNU Language Education Institute
Seoul National University



**Korean Language
Education Center
SNU Language
Education Institute
Seoul National University**

Seoul National University was established in 1946 as South Korea's first national university. The philosophical foundation of the school was to build a creative community of academics who would lead the world in the future. Since the foundation, faculty members and students at SNU have devoted themselves to education and research activities for over 70 years, supported by the large campus with various education and research facilities.

Ranked 29th internationally and 17th throughout Asia in the 2023 QS World University Rankings, SNU has earned its reputation beyond South Korea as an influential university in Asia and a prestigious institution of higher education in the global world.

**Greetings from the
Director of the Language
Education Institute,
Seoul National University**

I cordially welcome everyone who is interested in the Korean Language Education Center (KLEC) at Seoul National University's Language Education Institute (LEI).

Since its establishment in 1969, for nearly a half of century, the KLEC in the SNU LEI has provided high quality education in Korean language and culture to foreigners, Koreans from abroad and immigrants living in South Korea.

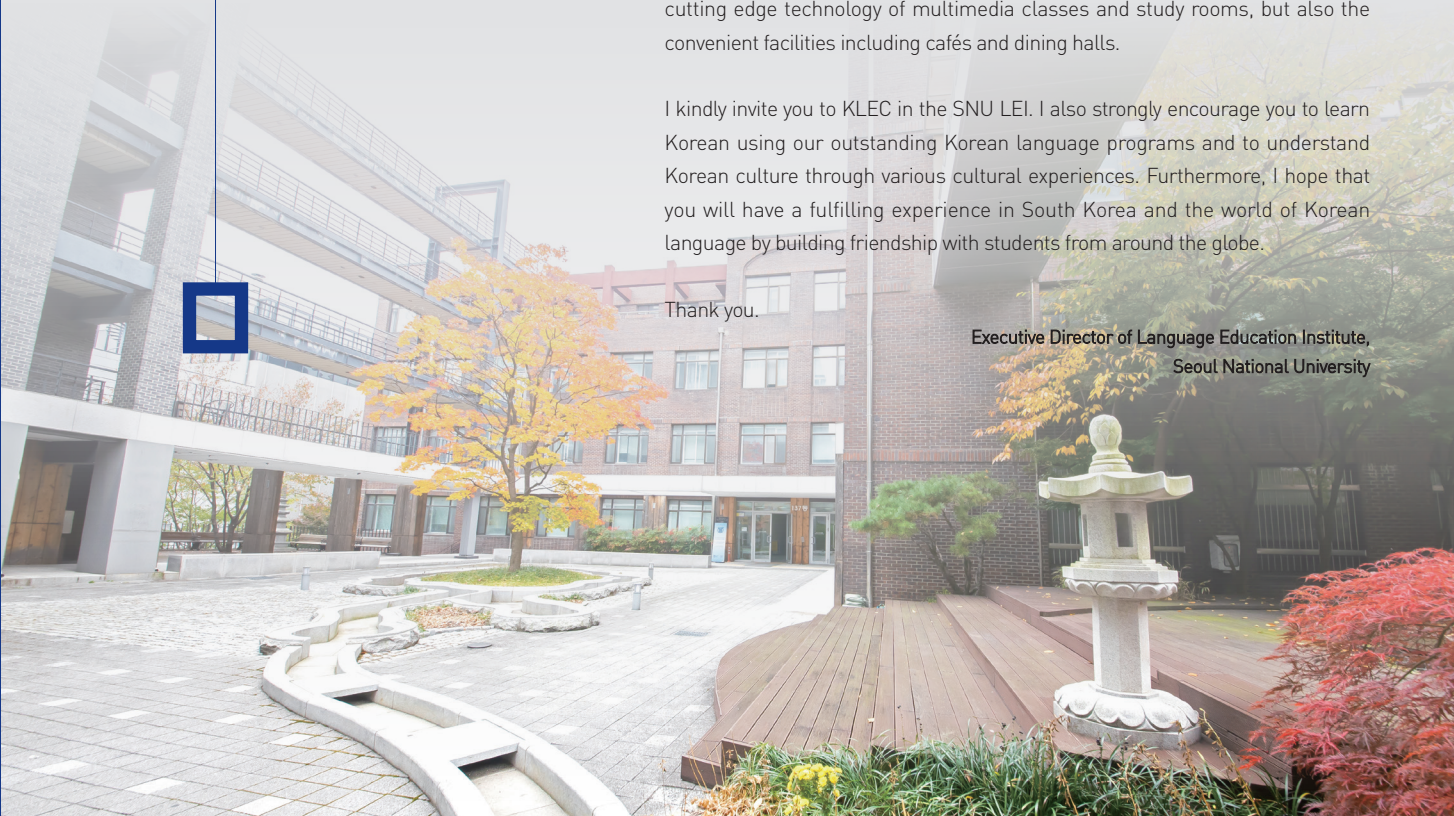
Each faculty member at the KLEC is one of South Korea's foremost experts in Korean language education with extensive teaching experience. Based on outstanding accomplishments in research on Korean language education and excellent pedagogy built from their long-term commitment to education, our dedicated staffs endeavor to provide the best programs that are tailored to the needs of diverse learners of Korean.

The KLEC provides the best educational environment ranging from its advanced educational facilities to convenient accommodations. There are two educational facility buildings surrounding the central garden featuring a unique Korean aesthetic. Students can benefit not only from the lecture halls with the most cutting edge technology of multimedia classes and study rooms, but also the convenient facilities including cafés and dining halls.

I kindly invite you to KLEC in the SNU LEI. I also strongly encourage you to learn Korean using our outstanding Korean language programs and to understand Korean culture through various cultural experiences. Furthermore, I hope that you will have a fulfilling experience in South Korea and the world of Korean language by building friendship with students from around the globe.

Thank you.

**Executive Director of Language Education Institute,
Seoul National University**



✓ K-CULTURE CLASSES

These classes allow students to learn Korean and Korean culture through various cultural experiences.

- Learning Taekwondo, Samulnori, Korean cooking and Korean paper craft.
- Field trips to Korean performances, Panmunjom, newspaper publishing companies and the Blue House.
- Visiting Seoul's attractions including ancient palaces, museums, Cheonggyecheon and Hanok Village.

✓ BUDDY PROGRAM

This program connects international students registered at the KLEC with the students in the Korean Language Teacher Training Program and SNU on a one-to-one pairing system. Each Buddy will regularly meet a KLEC student to offer help not only with Korean language studies but also everyday life in South Korea.

✓ Elective Classes

To satisfy individual students' diverse needs, elective classes are separately offered after regular class time for an additional fee.

- These elective classes include: Chinese Characters Class, Test of Proficiency in Korean (TOPIK) Preparation Class

※ This class may be canceled due to low enrollment.

02 Korean Language Teacher Training program

This program aims at fostering experts who will provide Korean language education in Korea and abroad, thus contributing to the internationalization of Korean and the enhancement of the quality of Korean language education domestically and globally. It offers systematic and practical training including classroom observations and mock classes in addition to theoretical education that satisfies the requirements for Korean language teachers designated in the Framework Act on the National Language. The course includes Korean linguistics, general linguistics, and Korean methodology.

Those who completed the program are currently participating not only in the SNU LEI, but also in Korean language education institutions abroad.

Program overview

Spring/fall regular program	15 weeks (total: 130 hours); 18:30-22:00, Mon./Wed./Fri.
Summer/winter special program	5 weeks (total: 130 hours); 9:30-17:20, Mon./Wed./Fri. 13:30-17:20, Tues./Thurs.

Areas of study

Korean linguistics, general and applied linguistics, Korean methodology, Korean culture, and Korean language teaching practice

Instructors

SNU professors, full-time LEI lecturers, and Korean language education experts

Instruction methods

Classroom lectures, teaching practices, classroom observations, mock classes, student guidance, hands-on activities, etc.

Eligibility

High school graduate or equivalent educational background

※ For foreign applicants: Bachelor's degree or prospective college graduate in Korea or abroad, who is qualified for at least one of the conditions: TOPIK level 6 or above, Completed Level 6 regular course from Korean language education center in South Korea, Majors related to Korean Education, or Bachelor's degree from university in South Korea.

Application Documents

- Online application: available on the website of the KLEC (lei.snu.ac.kr/klec).
※ Applications submitted by post or in person are not accepted.
- Study Plan
- Official academic transcript or certificate of graduation from the most recent school attended
- Application Fee: 30,000 won (non-refundable)
※ Application documents will not be returned to applicants.

Tuition fee

1,500,000 won

03

Special Programs

✓ Evening Classes

These classes are for adult learners to enhance their Korean proficiency for basic communication for everyday life.

Sessions

Four sessions per year (spring, summer, fall, and winter); 10 weeks per session

Class time

18:30-21:20, Mon./Thurs. (total: 60 hours per session)

Tuition fee

660,000 won

※ This class may be canceled due to low enrollment.

✓ 13-Week Korean Language Program

Tailored to the needs of exchange students and general learners with a visa, this program is offered for 13 weeks based on SNU's regular academic calendar. Classes provide only a moderate amount of study load to help students fully understand and practice the class materials.

Sessions

Two sessions per year (spring and fall); 13 weeks per session

Class time

09:00-12:00, Mon./Wed./Fri. (total: 117 hours)

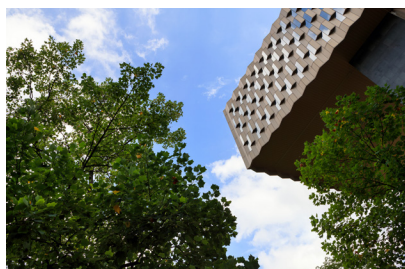
Tuition fee

1,150,000 won

04

Tailored Programs

- ❶ Malaysian Government Scholarship Students Program
- ❷ DLI (Defense Language Institute) Korean Immersion Program
- ❸ Keio University Student Short-term Program
- ❹ Seoul Japanese School Teacher Korean Language Program
- ❺ Sports Administrator Program
- ❻ Cultural Partnership Initiative Korean Language Program
- ❼ Yale University Light Fellowship Program
- ❽ ITPP Korean Language Program (Siheung Campus)



Application and Registration

Eligibility

High school graduate or equivalent educational background

Application Documents

For online application, go to "Online Application" on the Website (lei.snu.ac.kr/klec).

	Online application form	Study plan	Resume (curriculum vitae) or personal statement	Official academic transcript or certificate of graduation from the most recent school attended	Photocopy of passport	Bank Statement (Must be student's)	Photocopy of insurance certificate	Application fee (Non-refundable)
Regular Programs (morning classes, afternoon classes)	o	o	o	Both transcript and certification of graduation required	o	o Please refer to the guideline below		60,000won
Evening Classes	o			o	o		o	30,000won
13-Week Korean Language Program	o			o	o		o	60,000won
Online 3-Week Intensive Program	o			o	o			30,000won
Smart Korean Course (SNU Siheung Smart Campus)	o	o	o	Both transcript and certification of graduation required	o	o	o	60,000won

- * Applications submitted via e-mail or in person are not accepted.
- * Application documents will NOT be returned to applicants.
- * KLEC does not process applicant's visa [D-4] application.

* Guideline for Regular Program Applicants

(1) Study Plan

It should include reasons for applying and plans after completing the course in detail. Must be written in Korean, English, Chinese or Japanese, A4 size 1 page, free format.

(2) Resume or curriculum vitae

It should include the applicant's academic background and other achievements in brief. Must be written in Korean, English, Chinese or Japanese, A4 size 1 page, free format.

(3) ① Scanned version of official certificate of graduation from the most recent school attended in Korean, English, Chinese or Japanese. If the document is in another language, applicants must submit the scanned version of notarized translation certificate and original certificate of graduation.

② Scanned version of official academic transcript from the most recent school attended in Korean, English, Chinese or Japanese. If the document is in another language, applicants must submit the scanned version of notarized translation certificate and original academic transcript.

③ Apostille of graduation certificate and academic transcript. If an applicant's country does not provide an Apostille, the documents must be verified by the Korean Consulate.

* Documents required for Chinese students (This does not apply to students from Taiwan and Hong Kong)

1) Scanned version of official certificate of graduation from the most recent school attended

2) Scanned version of official academic transcript from the most recent school attended

3) Verification of graduation certificate:

Download and attach the original Ministry of Education Verification Report from verification report website www.chsi.com.cn / www.cdgd.edu.cn , OR receive the certificate notarized by a notary office and thereafter verified by the Korean Consulate.

(Please note: high school certificate of graduation can only be verified at www.chsi.com.cn)

4) Verification of academic transcript:

Download and attach the original Ministry of Education Verification Report from verification report website www.chsi.com.cn / www.cdgd.edu.cn , OR get the certificate notarized by a notary office and thereafter verified by the Korean Consulate.

* Please attach the Verification of academic transcript to "Graduation Certificate, Transcript Apostille or Verified by Korean Consulate" in the application.

5) For prospective high school graduates (not graduated yet) :

Scanned version of official certificate of expected graduation and general examination verification report. General examination reports must be verified by Verification report website www.chsi.com.cn, www.cdgd.edu.cn OR notarized by a notary office and thereafter verified by the Korean Consulate.

(4) Bank Statement (This is not required for the students who do not need a D-4 visas).

① The bank statement must be the student's. If the bank statement is under parents' name, please submit a certificate of family relationship.

② Above 10,000 USD & Certificate issued in 30 days.

* Documents required for Chinese students

Deposits must be frozen for more than 3 months.

* Documents required for Vietnamese students

1) Bank Balance Certificate holding minimum USD 10,000 (the balance must have remained more than 3 months)

OR

2) Confirmation of deposit for study abroad expenses

* Documents required for Uzbek students

- Bank Balance Certificate holding minimum USD 10,000 (the balance must have remained more than 3 months)

③ The bank statement should be in Korean, English, Chinese or Japanese. If the statement is in another language, applicants must submit the scanned version of notarized translation certificate and original bank statement.

Application Procedure

Submission of application documents ▶ screening of documents ▶ notification of screening results and guidance on the registration procedure ▶ payment of tuition fee → announcement on the beginning of classes ▶ placement test ▶ beginning of classes

Registration Procedure for Successful Applicants

Online credit card payments or virtual account payments: Payments available on the website (lei.snu.ac.kr/klec)

* For withdrawals, refunds, and deferrals, please refer to the KLEC website.



SNU Siheung Smart Campus

✓ Smart Korean Course

This intensive language course is offered year-round to students who learn Korean to enter university and graduate school, and to search for job and business opportunities in Korea.

Smart Korean Course	Beginner's	Intermediate	Advanced
	Level 1/2	Level 3/4	Level 5/6

Sessions	4 sessions per year; 10 weeks per session
Class time	09:00-12:50, Mon.-Fri. (total: 200 hours / session)
Tuition fee	1,600,000 won

* Please visit the website to check the academic calendar of Siheung Campus.



Online Course

✓ Online 3-Week Intensive Program

This course offers live streaming classes of SNU's 3-Week Intensive Korean Language Program online.

Class time	09:00-11:50, Mon.-Fri. (total 45 hours)
Tuition fee	470,000 won

※ The class time and tuition fee are subject to change. Please refer to the website.

